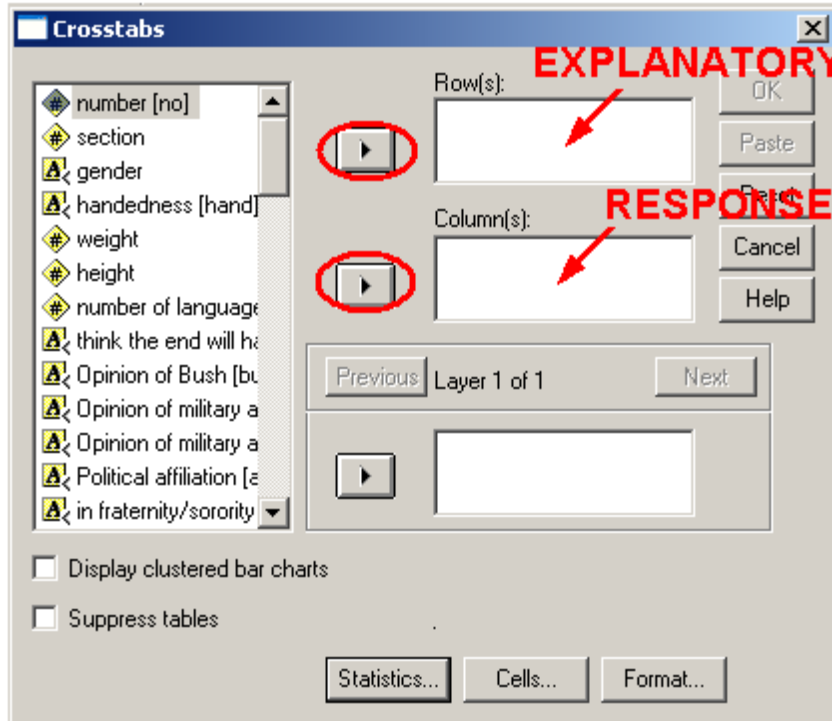


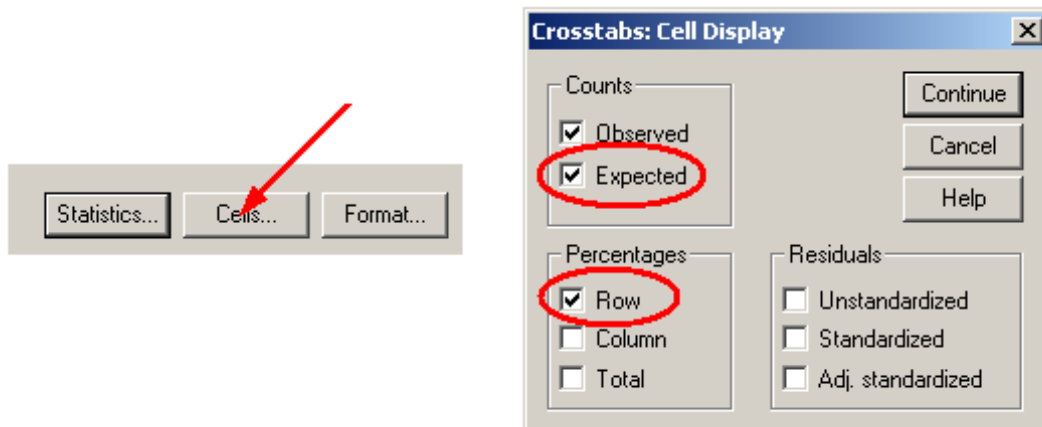
## Looking for associations between 2 categorical variables

### Creating a two way table

- 1) Once the data are entered into SPSS, go to Analyze→ Descriptive statistics→ Crosstabs...
- 2) Click the explanatory variable name, then click the upper right arrow button to move it to the Row(s): list
- 3) Click the response variable name, then click the lower right arrow button to move it to the Column(s): list

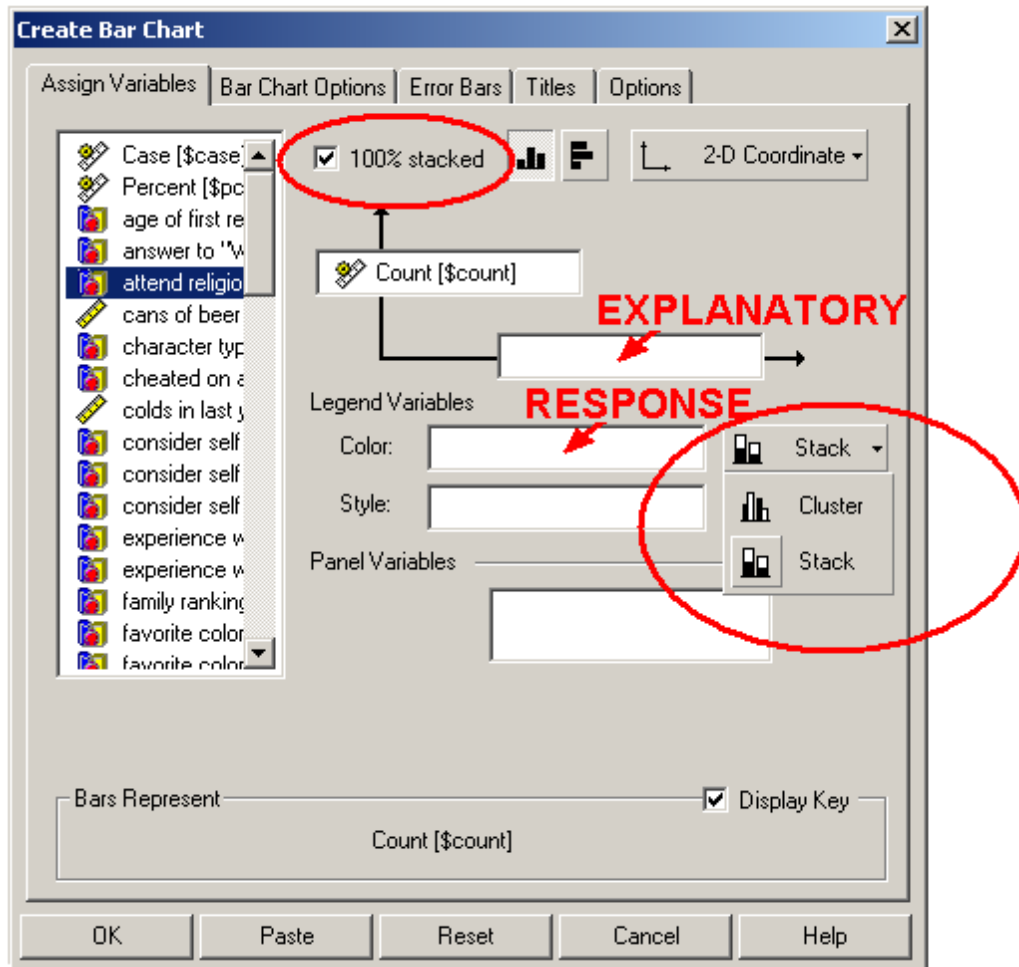


**To include row percents in the output**, click the “Cells” button, and then check “Row”. **To include the expected cell count in the output (for inferential purposes only)**, click the “Expected” button in this same window. Click “Continue” when you’re done.



## Creating a 100% stacked bar chart

- 1) Once the data are entered into SPSS, go to Graphs→ Interactive → Bar
- 2) Drag the explanatory variable name to the window that's stuck in the middle of a horizontal arrow
- 3) Drag the response variable to the “Color” box, located under “Legend variables”
- 4) Click the button that says “Cluster” and change it to “Stack”, then Choose 100% stacked near the top of the dialogue box.



## Creating a multiple pie charts

- 1) Once the data are entered into SPSS, go to Graphs→ Interactive → Pie→ Simple...
- 2) Drag the response variable to the 'Sliced By' list
- 3) Drag the explanatory variable to the 'Panel Variable' list

