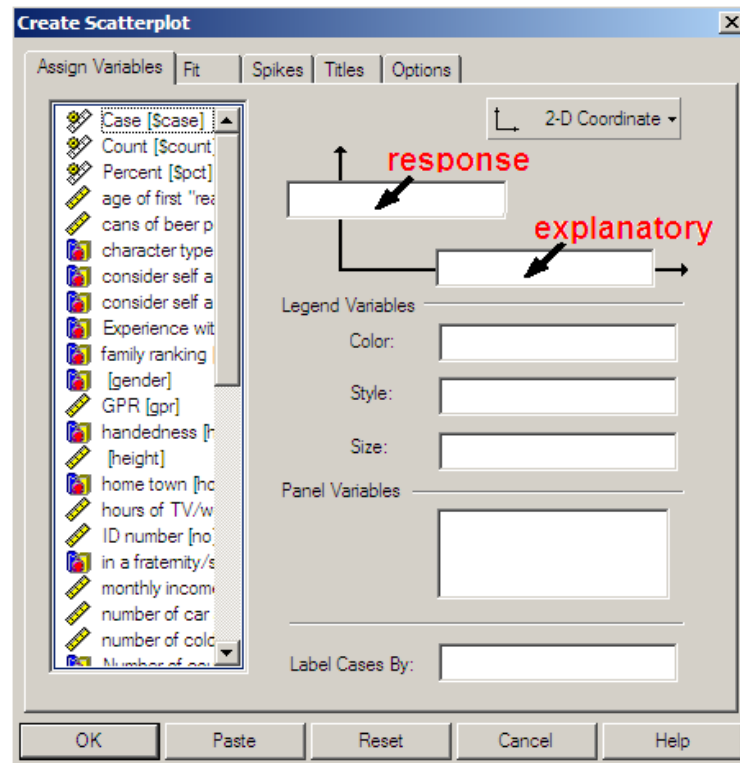


Looking for associations between 2 numeric variables

Creating a two way table

- 1) Once the data are entered into SPSS, go to Graphs→ Interactive → Scatterplot...
- 2) Drag the response variable name to the window that's stuck in the middle of a vertical arrow
- 3) Drag the explanatory variable to the window that's stuck in the middle of a horizontal arrow



Calculating the correlation

- 1) Once the data are entered into SPSS, go to Analyze→ Correlate→ Bivariate...
- 2) Click the explanatory variable name, then click the right arrow button to move it to the Variables list
- 3) Click the response variable name, then click the right arrow button to move it to the Variables list

