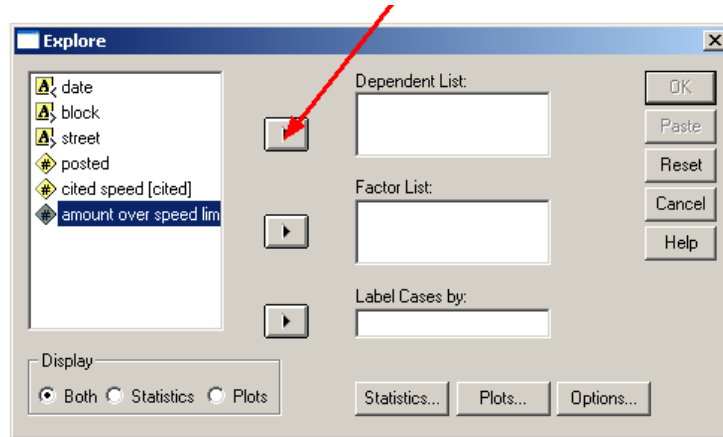


Numeric variables in SPSS

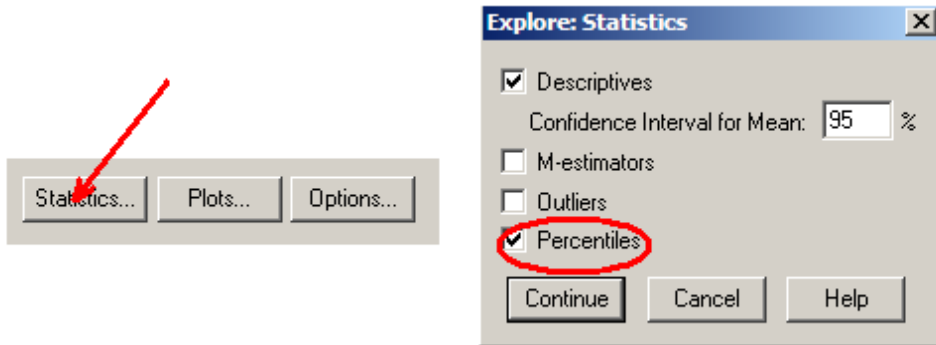
Creating a table of measures, histogram, box plot, and normal quantile plot

1) Once the data are entered into SPSS, go to Analyze→Descriptive Statistics→Explore...

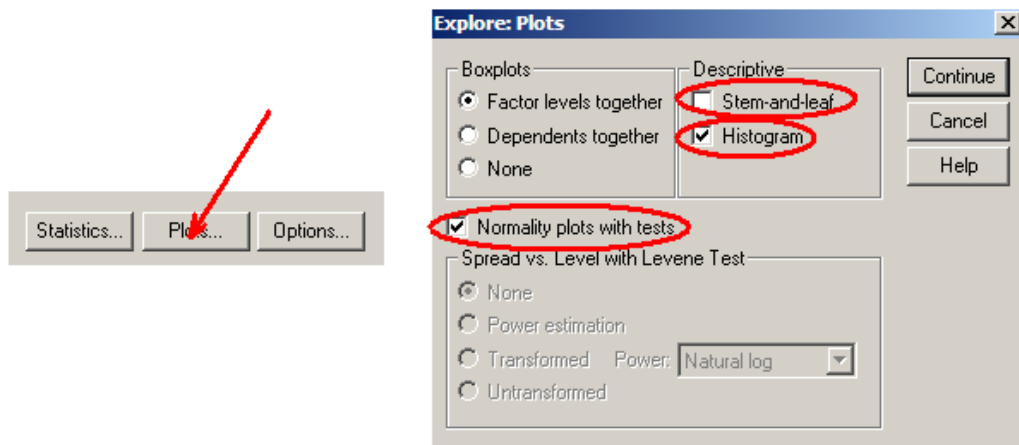
2) Click the variable name (in this example, the variable is *amount over speed limit*), then click the right arrow button to move it to the Dependent list



To include percentiles in the output, click the “Statistics” button, and then check “Percentiles”, then click Continue



To get a histogram and normal quantile plot, click the “Plots” button, and then UNCHECK “Stem-and-Leaf”, check “Histogram”, check “Normality Plots with tests”, then Continue



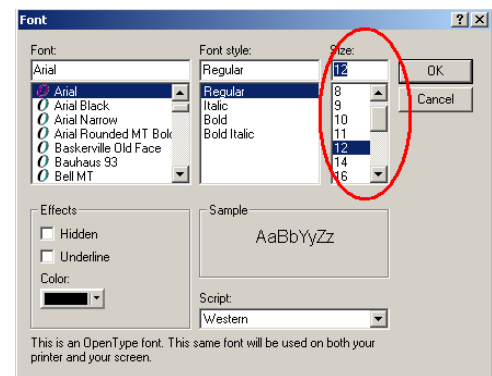
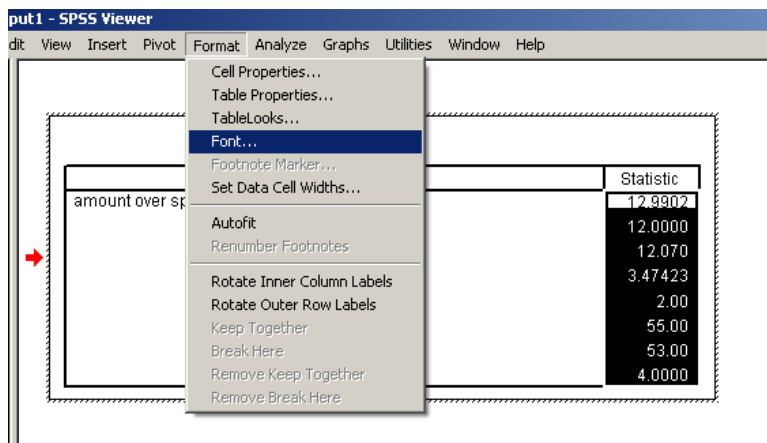
Format changes to output

To change the formatting or eliminate cells on the completed table of measures, double click the table in the output window to open the chart editor. To eliminate cells, highlight the NUMBERS you wish to eliminate, and hit “delete” on your keyboard.

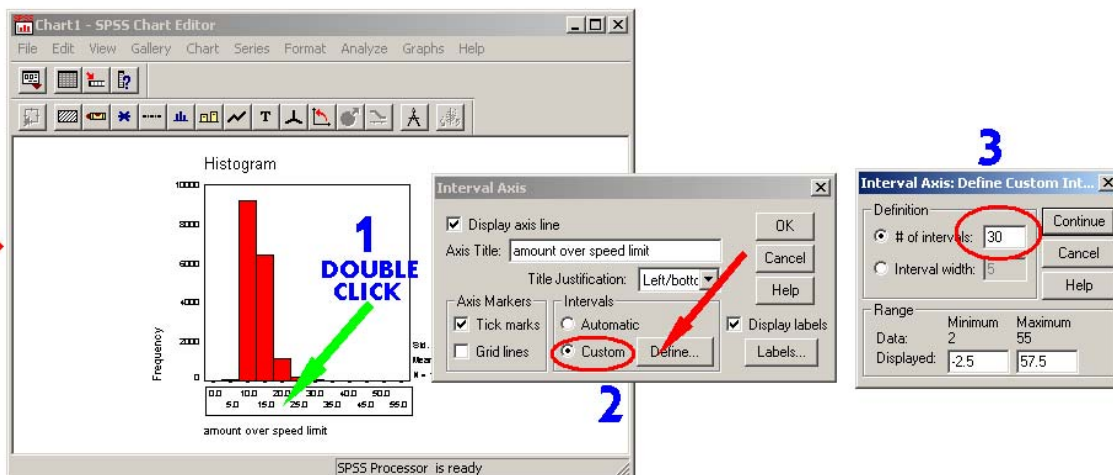
Descriptives			Statistic	Std. Error
amount over speed limit	Mean		12.9902	.02656
	95% Confidence Interval for Mean	Lower Bound	12.9381	
		Upper Bound	13.0422	
	5% Trimmed Mean		12.6660	
	Median		12.0000	
	Variance		12.070	
	Std. Deviation		3.47423	
	Minimum		2.00	
	Maximum		55.00	
	Range		53.00	
	Interquartile Range		4.0000	
	Skewness		2.430	.019
	Kurtosis		13.176	.037

Highlight numbers and hit “delete” key

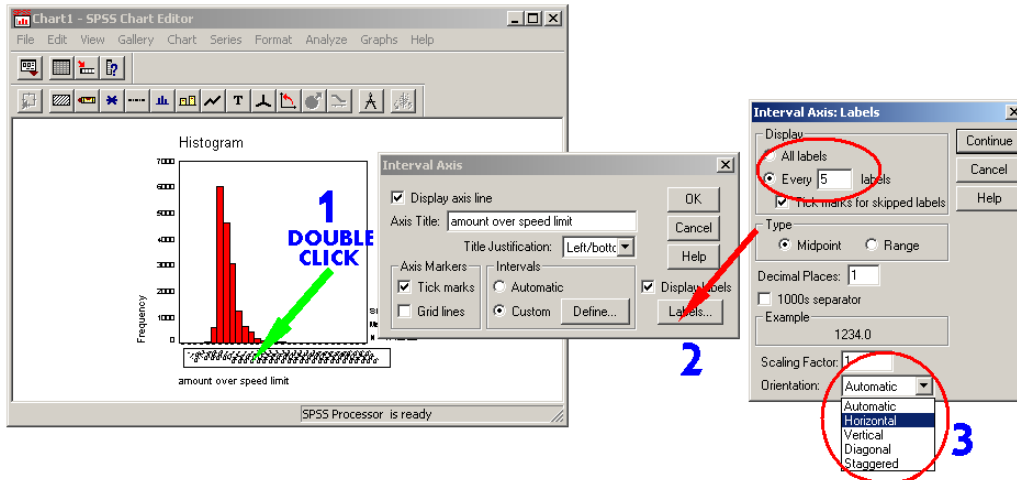
To change the font, highlight the text you would like to change, on the toolbar select Format→Font..., then select the desired font size (or any other font changes).




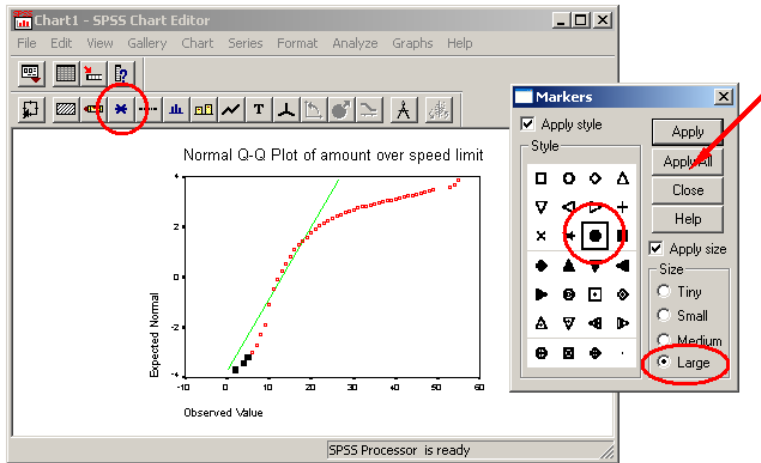
To change the number of bins on the histogram, first double click the histogram to open the chart editor. Double click the numbers on the x-axis, under intervals, select “custom”, then click the “Define box”. Then, under Definition, select # of intervals and type in the number of bins desired (in the example below, 30 Bins are selected), then click continue. Close the SPSS chart editor when you’re done.



To change the number of spaces between and orientation of x-axis labels on the histogram, first double click the histogram to open the chart editor. Click the Labels box. Under “Display”, select “Every ___ labels”, and type in the number of empty bins between labels (In the example below, 5 empty spaces have been selected between each label). To change the orientation of the lables to be (for example) horizontal, under under “Orientation” select “Horizontal”. Close the SPSS chart editor when you’re done



To change the markers on the normal quantile plot, double click the graph to open the SPSS chart editor. Then, in the tool bar of the chart editor, select the  icon. Under style, select the desired marker type. Under size, select the desired marker size. Click “apply all”, then close the window. Close the SPSS chart editor when you’re done.



To get rid of the labels on the outliers on the box plot, double click the graph to open the SPSS chart editor. Then double click the outlier labels, and select “Off” under the “Case Labels” pull down menu. Close the SPSS chart editor when you’re done.

